



ECONOMIC INDICATORS

NEW SOUTH WALES

EMBARGO: 11:30AM (CANBERRA TIME) MON 17 JAN 2000

CONTENTS

	page
Notes	2
NSW overview.....	3
Main features.....	4
List of tables and graphs	5
Population	6
Labour.....	7
Production	10
Building.....	11
Retail trade	12
New motor vehicle registrations	13
Tourism	14
Consumer and producer price indexes.....	15
Finance	16
State Government finance	17
Investment.....	18
International trade.....	19

- For further information about these and related statistics, contact Bill Markham on Sydney 02 9268 4376 or email bill.markham@abs.gov.au or Client Services in any ABS office as shown on the back cover of this publication.

NOTES

FORTHCOMING ISSUES

<i>ISSUE</i>	<i>ISSUE DATE</i>
February 2000	15 February 2000
March 2000	15 March 2000
April 2000	17 April 2000
May 2000	15 May 2000
June 2000	15 June 2000
July 2000	17 July 2000

GENERAL

This publication provides information on a wide range of economic indicators which are the latest available at the time of publication. In a number of cases, figures appearing in this summary are preliminary and are subject to revision in subsequent issues.

SEASONAL ADJUSTMENT AND TREND ESTIMATION

Seasonal adjustment is a means of removing the estimated effects of normal seasonal variation from a series so that the effects of other variations on that series can be more clearly recognised. Seasonal adjustment does not aim to remove the irregular or non-seasonal influences which may be present. This means that movements of seasonally adjusted estimates may not be reliable indicators of trend behaviour. Smoothing seasonally adjusted series produces a measure of the underlying trend by reducing the impact of the irregular component of the series. This smoothing technique does result in revisions to the most recent estimates as additional observations become available. For an explanation of seasonal adjustment derivation, refer to the publication *Seasonally Adjusted Indicators* (Cat. no. 1308.0).

STANDARD ERRORS OF ESTIMATES

One measure of the variability which occurs as a result of surveying only samples of the total business population is the standard error. There are about two chances in three that a survey estimate is within one standard error of the figure that would have been obtained if all businesses had been included, and about 19 chances in 20 that it is within two standard errors. The standard error can also be expressed as a percentage of the estimate and this is known as the relative standard error (RSE).

Current publications produced by the ABS are listed in the *Catalogue of Publications* (Cat. no. 1101.0). A *Release Advice* (Cat. no. 1105.0) is issued on Tuesdays and Fridays which lists publications to be released in the next few days. These publications are available from any ABS office.

SYMBOLS AND OTHER USAGES

kWh	kilowatt hour
teraJ	terajoule
n.a.	not available
n.p.	not available for publication but included in totals where applicable
n.y.a	not yet available
r	figure or series revised since previous issue
. .	not applicable

Gregory W. Bray
Regional Director
New South Wales

NSW OVERVIEW

EMPLOYMENT	Employment in NSW decreased by 18,800 in November 1999 to 2,955,600 in seasonally adjusted terms. National employment in November 1999 was 8,872,600.
UNEMPLOYMENT	Unemployment in NSW fell by 6.7% to a seasonally adjusted figure of 175,600 in November 1999. The unemployment rate fell from 6.0% in October 1999 to 5.6% in November 1999. The national unemployment rate was 6.7% in November 1999.
INDUSTRIAL DISPUTES	In NSW in September 1999 there were 33,800 working days lost due to industrial disputes.
BUILDING APPROVALS	The seasonally adjusted number of new dwelling units approved for NSW in October 1999 increased by 16.6% from the previous month to 4,659.
RETAIL	In seasonally adjusted terms, total retail sales for NSW in October 1999 were \$4,193.3 million. For September 1999, the figure was \$4,209.2 million.
NEW MOTOR VEHICLE REGISTRATIONS	New motor vehicle registrations for NSW in seasonally adjusted terms in October 1999 increased slightly from the previous month to 21,245.
TOURISM	In NSW the room occupancy rate for the September quarter 1999 increased by 3.2 percentage points, compared with the previous September quarter, to 61.1%. There was also an increase of 3.2 percentage points compared with the June quarter 1999.
FINANCE	The seasonally adjusted value of housing finance commitments for owner occupation in NSW in October 1999 was \$3,004 million, up 19.1% on the previous month and up 58.2% since October 1998.
IMPORTS AND EXPORTS	The customs value of imports into NSW during October 1999 was \$3,768 million, a decrease of 9.1% on September 1999. The value of exports (FOB) from NSW in October 1999 was \$1,514 million, a fall of 3.5% over the same period.
STATE GOVERNMENT FINANCE	The underlying General Government GFS result for the three months ended 30 September 1999 was a surplus of \$352 million. The result comprises a surplus of \$967 million on current transactions and a deficit of \$615 million on capital transactions.

MAIN FEATURES

IMPORTS AND EXPORTS

In October 1999, the customs value of imports into NSW was \$3,768 million and the value of exports (FOB) from NSW was \$1,514 million. In terms of annual movements, imports into NSW increased by 2.4% compared to October 1998, while exports decreased slightly (0.8%) over the same period. At the national level, imports at \$10,220 million rose 13.4% on previous month and were 13.5% up on the figure a year ago. Exports were \$7,285 million, up 3.4% and down 1.9% respectively over the same periods.

Commodities exported from NSW in October 1999 included Meat and meat preparations (\$88 million), Cereal and cereal preparations (\$102 million), Wool and other animal hair (\$75 million), Coal, coke and briquettes (\$240 million), Iron and steel (\$52 million), aluminium (\$103 million), and Office machines and automatic data processing machines (\$30 million). Significant changes from the previous month occurred for Wool and other animal hair (up 9.9%) and Iron and steel (down 13.2%). Changes from October 1998 were significant for Cereal and cereal preparations (up 65.1%) and Coal, coke and briquettes (down 32.0%). Nationally, significant annual movements occurred for Cereal and cereal preparations (up 21.8%) and Iron and steel (down 17.5%).

TOURISM

In NSW, the number of room nights occupied in licensed hotels, motels and guest houses and serviced apartments with 15 or more rooms or units in the September quarter 1999 increased by 7.9% on the June quarter 1999 to 3,345,000. Compared to the September quarter 1998, there was an increase of 8.7%. At the national level, the number of room nights occupied increased by 10.3% and 7.8% over the same periods.

In NSW the room occupancy rate for licensed hotels in the September quarter 1999 was 69.3%, a rise of 4.2% from the September quarter 1998. The occupancy rate for motels and guest houses increased by 6.1% to 55.6% and the occupancy rate for serviced apartments rose by 7.1% to 63.4% over the same period.

In the Sydney Tourism Region, room occupancy rate for the September quarter 1999 for accommodation establishments overall was 71.6%, an increase of 8.3% over the year. For the September quarter 1999, room occupancy rates for licensed hotels, motels and guest houses, and serviced apartments were 72.9%, 68.0% and 73.9% respectively.

In NSW, takings from accommodation increased in aggregate for each accommodation type in the September quarter 1999 compared with the September quarter 1998 with an overall increase of 9.6% to \$375.0 million. In the Sydney Tourism Region, takings from accommodation were \$247.5 million for the September quarter 1999, accounting for 66% of the total for NSW. In NSW average takings per room night occupied in licensed hotels was \$144.8, \$82.9 for motels and guest houses and \$133.8 for serviced apartments. In the Sydney Tourism Region average takings per room night were \$147.8, \$95.6 and \$145.0 for each accommodation type respectively.

LIST OF TABLES AND GRAPHS

page

POPULATION	1 Estimated resident population, NSW	6
LABOUR	2 Labour data, latest time period, NSW and Australia	7
	3 Labour data, time series, NSW	7
	4 Labour force status of the civilian population, NSW	8
	5 Graph: Unemployment rate, NSW and Australia	9
	6 Coal, electricity and gas production, latest time period, NSW and Australia	10
PRODUCTION	7 Coal, electricity and gas production, time series, NSW	10
BUILDING	8 Building approvals, latest time period, NSW and Australia	11
	9 Building approvals, time series, NSW	11
RETAIL TRADE	10 Turnover of retail establishments, latest time period, NSW and Australia, seasonally adjusted	12
	11 Turnover of retail establishments, NSW, seasonally adjusted, time series	12
NEW MOTOR VEHICLE REGISTRATIONS	12 New motor vehicle registrations, latest time period, NSW and Australia	13
	13 New motor vehicle registrations, seasonally adjusted, time series, NSW	13
TOURISM	14 Accommodation establishment, latest time period, NSW and Australia	14
	15 Accommodation establishment, time series, Sydney and NSW	14
	16 Graph: Accommodation establishments, monthly room occupancy rate, original	14
CONSUMER AND PRODUCER PRICE INDEXES	17 Consumer and producer price indexes, latest time period, NSW and Australia	15
	18 Consumer and producer price indexes, time series, NSW	15
	19 Graph: Consumer Price Index, Sydney and weighted average of eight capital cities	15
FINANCE	20 Finance commitments, latest time period, NSW and Australia	16
	21 Finance commitments, time series, NSW	16
STATE GOVERNMENT FINANCE	22 Government finance, budget sector, time series, NSW	17
INVESTMENT	23 Actual private new fixed capital expenditure, latest time period, NSW and Australia, trend	18
	24 Actual private new fixed capital expenditure, time series, NSW, trend	18
	25 Graph: Actual private new fixed capital expenditure by type of asset, trend estimate, NSW	18
INTERNATIONAL TRADE	26 Imports and exports, latest time period, NSW and Australia	19
	27 Imports and exports, time series, NSW	19

1 ESTIMATED RESIDENT POPULATION—NSW

Period	Estimated resident population at end of period			Increase during period			Mean estimated resident population for year ended	
	Males	Females	Persons	Natural increase(a)	Net estimated migration	Total increase(b)	30 June	31 December
	'000	'000	'000	'000	'000	'000	'000	'000
1996	3 098.9	3 143.1	6 241.9	41.8	31.3	73.1	6 167.2	6 204.2
1997	3 128.9	3 171.5	6 300.5	40.9	17.6	58.5	6 240.9	6 276.1
1998	3 168.3	3 207.8	6 376.2	40.5	35.2	75.7	6 307.1	6 344.3
1998								
March qtr	3 139.1	3 180.4	6 319.6	10.3	8.8	19.1
June qtr	3 146.3	3 187.2	6 333.5	9.9	4.1	14.0
September qtr	3 157.3	3 197.6	6 354.9	8.2	13.2	21.4
December qtr	3 168.3	3 207.8	6 376.2	12.1	9.1	21.2
1999								
March qtr	3 179.0	3 218.2	6 397.2	9.1	11.9	21.0
June qtr	3 186.9	3 224.8	6 411.7	9.7	4.8	14.5

(a) Excess of live births over deaths.

(b) For dates prior to June 1996, differences between the total increase shown and the sum of the natural increase and net estimated migration arise from retrospective adjustments to population estimates (which are made after each Census) to compensate for any intercensal discrepancy. A description of intercensal discrepancy is contained in the ABS Information Paper: Demographic Estimates—Concepts, Sources and Methods (Cat. no. 3228.0).

Source: Australian Demographic Statistics (Cat. no. 3101.0).

2 LABOUR—NSW AND AUSTRALIA

Indicator	Unit	Latest period	Latest figure	New South Wales			Australia	
				%	%	Latest figure	%	%
Employed persons (seasonally adjusted)	'000	Nov 99	2 955.6	-0.6	3.4	8 872.6	-0.1	2.8
Unemployed persons (seasonally adjusted)	'000	Nov 99	175.6	-6.7	-26.3	641.4	-4.8	-13.6
Labour force (seasonally adjusted)	'000	Nov 99	3 131.2	-1.0	1.1	9 514.0	-0.4	1.5
Participation rate (seasonally adjusted)	%	Nov 99	61.3	-1.1	-0.5	63.1	-0.5	0.0
Unemployment rate (seasonally adjusted)	%	Nov 99	5.6	-6.7	-27.3	6.7	-5.6	-15.2
Industrial disputes—working days lost	'000	Sep 99	33.8	5.3	344.7	64.8	-50.2	35.0
Job vacancies	'000	Aug 99	36.3	22.2	37.5	88.0	23.6	20.5
Average weekly employee earnings—full-time adult ordinary time earnings (seasonally adjusted)	\$	Aug 99	788.0	-0.5	3.7	753.2	0.3	2.1

Source: *Average Weekly Earnings, States and Australia* (Cat. no. 6302.0), *Industrial Disputes, Australia* (Cat. no. 6321.0), *Job Vacancies and Overtime, Australia* (Cat. no. 6354.0), *Labour Force, Australia, Preliminary* (Cat. no. 6202.0).

3 LABOUR—NEW SOUTH WALES

Period	Seasonally adjusted						
	Employed persons '000	Unemployed persons '000	Labour force '000	Participation rate %	Unemployment rate %	Industrial disputes (working days lost) '000	Job vacancies '000
1998							
September	2 895.0	227.3	3 122.3	62.2	7.3	7.6	..
October	2 904.6	207.2	3 111.8	61.9	6.7	8.9	..
November	2 859.4	238.2	3 097.6	61.6	7.7	10.6	24.1
December	2 891.5	211.5	3 103.0	61.6	6.8	28.8	..
1999							
January	2 884.6	215.2	3 099.8	61.5	6.9	2.7	..
February	2 906.0	208.7	3 114.7	61.7	6.7	40.3	24.4
March	2 903.5	219.8	3 123.3	61.8	7.0	7.8	..
April	2 901.0	216.1	3 117.1	61.6	6.9	2.1	..
May	2 918.7	203.5	3 122.2	61.6	6.5	3.1	29.7
June	2 929.1	200.0	3 129.1	61.7	6.4	3.9	..
July	2 942.5	191.3	3 133.8	61.7	6.1	23.0	..
August	2 933.2	212.8	3 146.0	61.9	6.8	32.0	36.3
September	2 950.9	218.6	3 169.5	62.3	6.9	33.8	..
October	2 974.4	188.3	3 162.7	62.0	6.0	n.y.a.	..
November	2 955.6	175.6	3 131.2	61.3	5.6	n.y.a.	n.y.a.

Source: *Industrial Disputes, Australia* (Cat. no. 6321.0), *Job Vacancies and Overtime, Australia* (Cat. no. 6354.0), *Labour Force, Australia, Preliminary* (Cat. no. 6202.0).

4 LABOUR FORCE STATUS, NSW—ORIGINAL

Month	Employed		Unemployed		Labour force	Not in labour force	Civilian population aged 15 years and over	Unemployment rate(a)	Participation rate(b)
	Full-time workers	Total	Looking for full-time work	Total					
	'000	'000	'000	'000	'000	'000	'000	%	%
MALES									
November									
1995	1 409.9	1 593.0	120.6	134.0	1 726.9	645.0	2 372.0	7.8	72.8
1996	1 416.1	1 587.9	116.2	132.6	1 720.5	684.3	2 404.8	7.7	71.5
1997	1 431.3	1 615.4	117.5	136.6	1 752.0	685.1	2 437.1	7.8	71.9
1998									
September	1 466.6	1 641.6	117.0	134.2	1 783.4	681.8	2 465.2	7.5	72.3
October	1 460.5	1 648.9	96.8	110.5	1 759.4	709.0	2 468.4	6.3	71.3
November	1 441.2	1 633.0	112.0	129.4	1 762.4	709.1	2 471.5	7.3	71.3
December	1 467.6	1 658.3	107.6	121.5	1 779.8	695.0	2 474.7	6.8	71.9
1999									
January	1 447.1	1 633.0	124.6	140.8	1 773.8	703.8	2 477.5	7.9	71.6
February	1 453.4	1 644.9	113.5	133.1	1 778.0	702.4	2 480.3	7.5	71.7
March	1 454.3	1 661.9	102.9	126.1	1 788.0	695.2	2 483.1	7.1	72.0
April	1 456.1	1 657.8	95.6	115.5	1 773.3	713.3	2 486.6	6.5	71.3
May	1 460.0	1 662.7	93.3	110.1	1 772.8	717.2	2 490.0	6.2	71.2
June	1 459.4	1 668.1	91.6	108.0	1 776.1	717.3	2 493.4	6.1	71.2
July	1 491.8	1 687.4	83.2	101.3	1 788.7	707.7	2 496.4	5.7	71.7
August	1 464.1	1 662.6	95.9	115.3	1 777.8	721.6	2 499.4	6.5	71.1
September	1 502.7	1 696.2	97.6	124.8	1 820.9	681.5	2 502.4	6.9	72.8
October	1 504.7	1 688.4	87.4	105.5	1 793.9	712.6	2 506.4	5.9	71.6
November	1 498.9	1 681.8	81.4	95.1	1 777.0	733.5	2 510.5	5.4	70.8
FEMALES									
November									
1995	738.2	1 224.6	64.8	94.0	1 318.6	1 141.7	2 460.3	7.1	53.6
1996	732.1	1 215.9	49.7	81.9	1 297.8	1 198.8	2 496.5	6.3	52.0
1997	727.5	1 230.3	61.3	87.0	1 317.4	1 210.5	2 527.9	6.6	52.1
1998									
September	756.9	1 276.0	61.7	97.1	1 373.1	1 180.6	2 553.7	7.1	53.8
October	751.4	1 258.7	54.8	90.3	1 349.0	1 207.6	2 556.6	6.7	52.8
November	733.3	1 235.5	61.0	96.8	1 332.3	1 227.2	2 559.6	7.3	52.1
December	762.7	1 276.6	57.4	86.6	1 363.3	1 199.2	2 562.5	6.4	53.2
1999									
January	739.5	1 218.0	62.6	90.1	1 308.0	1 257.1	2 565.1	6.9	51.0
February	738.4	1 236.4	67.4	104.5	1 340.9	1 226.8	2 567.7	7.8	52.2
March	728.8	1 238.3	64.3	108.7	1 347.0	1 223.3	2 570.2	8.1	52.4
April	726.0	1 242.6	62.5	98.5	1 341.2	1 232.0	2 573.2	7.3	52.1
May	729.5	1 250.2	56.8	90.0	1 340.3	1 235.9	2 576.1	6.7	52.0
June	746.9	1 264.6	52.3	81.5	1 346.2	1 232.9	2 579.1	6.1	52.2
July	754.9	1 265.7	53.2	76.5	1 342.2	1 239.8	2 582.0	5.7	52.0
August	723.4	1 237.1	54.9	86.7	1 323.8	1 261.2	2 584.9	6.5	51.2
September	749.9	1 285.6	61.3	97.6	1 383.2	1 204.7	2 587.9	7.1	53.4
October	767.2	1 289.1	51.3	77.1	1 366.2	1 225.1	2 591.3	5.6	52.7
November	756.5	1 283.3	50.5	71.8	1 355.1	1 239.7	2 594.8	5.3	52.2

For footnotes see end of table.

4 LABOUR FORCE STATUS, NSW—ORIGINAL—continued

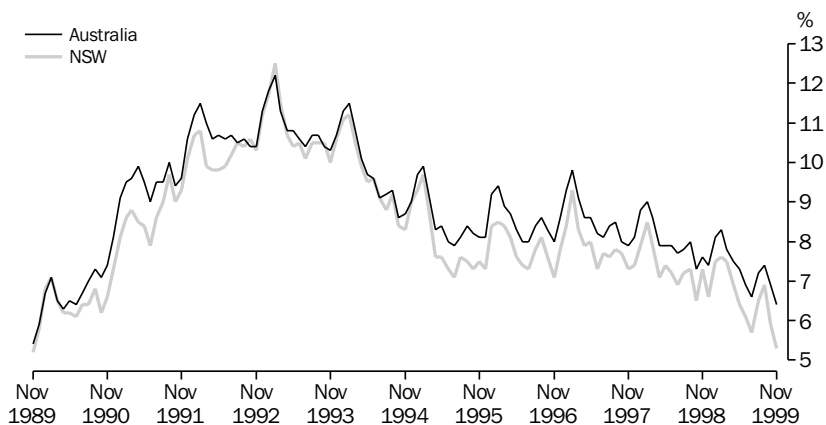
Month	Employed		Unemployed		Labour force	Not in labour force	Civilian population aged 15 years and over	Unemployment rate(a)	Participation rate(b)
	Full-time workers	Total	Looking for full-time work	Total					
	'000	'000	'000	'000	'000	'000	'000	%	%
PERSONS									
November									
1995	2 148.1	2 817.6	185.4	227.9	3 045.5	1 786.7	4 832.2	7.5	63.0
1996	2 148.1	2 803.8	166.0	214.5	3 018.3	1 883.1	4 901.3	7.1	61.6
1997	2 158.8	2 845.8	178.8	223.6	3 069.4	1 895.6	4 965.0	7.3	61.8
1998									
September	2 223.5	2 925.2	178.7	231.3	3 156.5	1 862.4	5 018.9	7.3	62.9
October	2 211.9	2 907.6	151.6	200.8	3 108.4	1 916.6	5 025.0	6.5	61.9
November	2 174.5	2 868.5	173.0	226.3	3 094.7	1 936.4	5 031.1	7.3	61.5
December	2 230.2	2 934.9	165.0	208.1	3 143.1	1 894.2	5 037.2	6.6	62.4
1999									
January	2 186.6	2 850.9	187.1	230.9	3 081.8	1 960.9	5 042.6	7.5	61.1
February	2 191.8	2 881.3	180.9	237.5	3 118.8	1 929.2	5 048.0	7.6	61.8
March	2 183.2	2 900.2	167.2	234.8	3 134.9	1 918.4	5 053.4	7.5	62.0
April	2 182.1	2 900.4	158.1	214.0	3 114.5	1 945.3	5 059.8	6.9	61.6
May	2 189.6	2 912.9	150.2	200.1	3 113.1	1 953.1	5 066.1	6.4	61.4
June	2 206.3	2 932.7	143.9	189.6	3 122.3	1 950.3	5 072.5	6.1	61.6
July	2 246.7	2 953.2	136.4	177.8	3 131.0	1 947.5	5 078.5	5.7	61.7
August	2 187.6	2 899.6	150.8	202.0	3 101.6	1 982.8	5 084.4	6.5	61.0
September	2 252.6	2 981.8	158.9	222.4	3 204.2	1 868.2	5 090.3	6.9	62.9
October	2 271.8	2 977.5	138.6	182.6	3 160.1	1 937.7	5 097.8	5.8	62.0
November	2 255.4	2 965.1	131.9	167.0	3 132.1	1 973.2	5 105.3	5.3	61.3

(a) The number of unemployed in each group expressed as a percentage of the labour force in the same group.

(b) The labour force in each group expressed as a percentage of the civilian population aged 15 years and over in the same group.

Source: Labour Force, Australia, Preliminary (Cat. no. 6202.0).

5 UNEMPLOYMENT RATE—ORIGINAL



Source: Labour Force, Australia, Preliminary (Cat. no. 6202.0).

6 COAL, ELECTRICITY AND GAS PRODUCTION, NSW AND AUSTRALIA—ORIGINAL

Indicator	Unit	Latest period	New South Wales				Australia		
			Latest figure	Change	Change	Latest figure	Change	Change	
				from prior period	from same period prior year		from prior period	from same period prior year	
%	%	%	%	%					
Raw coal won—									
Underground	'000 tonnes	Sept 99	5 552	45.3	15.9	8 862	23.6	43.7	
Open cut	'000 tonnes	Sept 99	8 215	30.3	28.9	19 490	10.3	37.5	
Total	'000 tonnes	Sept 99	13 767	36.0	23.3	28 352	14.2	39.4	
Electricity	mill. kWh	Jun qtr 99	16 365	4.8	5.2	45 227	0.3	2.1	
Gas(a)	teraJ	Jun qtr 99	30 428	36.0	2.8	181 952	25.5	4.3	

(a) Available for issue through mains. Includes ACT.

Source: Joint Coal Board for NSW and Australia from ABS unpublished statistics, Manufacturing Production, Australia (Cat. no. 8301.0).

7 COAL, ELECTRICITY AND GAS PRODUCTION, NSW—ORIGINAL

Period	Raw coal won			Electricity	Gas(a)
	Underground	Open cut	Total		
	'000 tonnes	'000 tonnes	'000 tonnes		
1996-97	54 642	69 036	123 678	62 788	109 284
1997-98	58 299	75 710	134 009	61 804	111 665
1998-99	51 158	80 209	131 367	63 743	110 092
1998					
July	5 130	7 241	12 371	16 543	32 258
August	3 788	5 616	9 404		
September	4 734	6 372	11 106		
October	4 732	7 131	11 863	15 227	25 039
November	3 988	6 931	10 919		
December	3 346	6 500	9 846		
1999					
January	3 273	6 159	9 432	15 609	22 367
February	3 848	6 913	10 761		
March	4 921	7 827	12 748		
April	3 525	5 768	9 293	16 365	30 428
May	4 664	6 303	10 967		
June	5 209	7 448	12 657		
July	4 137	6 270	10 407	n.y.a.	n.y.a.
August	3 820	6 306	10 126		
September	5 552	8 215	13 767		

(a) Available for issue through mains. Includes ACT.

Source: Joint Coal Board, Manufacturing Production, Australia (Cat. no. 8301.0).

8 BUILDING APPROVALS—NSW AND AUSTRALIA

Indicator	Unit	Latest period	Latest figure	New South Wales		Australia		
				Change from prior period %	Change from same period prior year %	Latest figure	Change from prior period %	Change from same period prior year %
Number of dwelling units(a) (seasonally adjusted)—								
New houses	no.	Oct 99	2 759	19.8	17.6	10 310	3.0	19.0
Total	no.	Oct 99	4 659	16.6	10.3	14 760	7.3	16.5
Value of new residential building (seasonally adjusted)	\$m	Oct 99	583.2	19.0	19.4	1 768.3	10.9	26.1
Value of alterations and additions to residential building(b) (seasonally adjusted)	\$m	Oct 99	121.1	7.9	36.5	285.5	5.0	22.0
Value of non-residential building(c) (original)	\$m	Oct 99	265.9	3.1	-15.2	854.8	3.2	-24.0
Value of all building (original)	\$m	Oct 99	895.8	-1.9	3.9	2 791.9	-3.3	1.0

(a) Includes dwelling units approved as part of the construction of non-residential building and alterations and additions to existing buildings (including conversions to dwelling units).

(b) Valued at \$10,000 or more. Includes conversions of existing buildings into residential buildings.

(c) Valued at \$50,000 or more.

Source: Building Approvals, Australia (Cat. no. 8731.0).

9 BUILDING APPROVALS—NSW

Period	Number of dwelling units(a), seasonally adjusted				Value of building approvals			
	New houses		Total		Seasonally adjusted		Original	
	Private sector	Total	Private sector	Total	New residential building	Alterations and additions to residential building(b)	Non-residential building(c)	All building
	no.	no.	no.	no.	\$m	\$m	\$m	\$m
1996-97	5 169.2	11 356.6
1997-98	5 910.9	13 348.6
1998-99	4 534.9	11 872.4
1998								
August	1 999	2 017	3 696	3 866	453.9	94.1	612.0	1 158.0
September	2 051	2 073	3 810	3 904	423.1	101.5	322.9	867.3
October	2 336	2 346	4 062	4 225	488.4	88.7	313.5	862.1
November	2 272	2 337	4 109	4 420	535.4	92.9	461.5	1 180.1
December	2 333	2 358	4 274	4 451	530.7	91.9	234.8	840.5
1999								
January	2 237	2 262	4 182	4 286	503.7	92.5	297.4	757.2
February	2 413	2 428	4 052	4 126	508.7	104.8	432.0	996.2
March	2 459	2 476	4 141	4 277	497.8	90.0	395.5	1 013.6
April	2 266	2 275	4 194	4 265	482.8	89.1	207.3	781.6
May	2 582	2 610	4 174	4 252	527.0	108.5	424.4	1 141.4
June	2 452	2 464	4 478	4 548	605.4	91.1	503.7	1 171.2
July	2 718	2 730	4 408	4 572	604.4	105.1	523.1	1 257.6
August	2 514	2 516	4 923	4 998	645.6	117.6	505.7	1 265.7
September	2 260	2 303	3 935	3 997	489.9	112.2	257.8	913.6
October	2 735	2 759	4 410	4 659	583.2	121.1	265.9	895.8

(a) Includes dwelling units approved as part of the construction of non-residential building and alterations and additions to existing buildings (including conversions to dwelling units).

(b) Valued at \$10,000 or more. Includes conversions of existing buildings into residential buildings.

(c) Valued at \$50,000 or more.

Source: Building Approvals, Australia (Cat. no. 8731.0).

10 TURNOVER OF RETAIL ESTABLISHMENTS(a), NSW AND AUSTRALIA—SEASONALLY ADJUSTED

Indicator	Latest period	New South Wales			Australia		
		Latest figure	Change from prior period	Change from same period prior year	Latest figure	Change from prior period	Change from same period prior year
		\$m	%	%	\$m	%	%
Food retailing	Oct 99	1 572.1	-0.6	2.9	4 831.9	0.8	4.5
Department stores	Oct 99	380.5	4.3	9.1	1 097.4	2.3	7.2
Clothing and soft good retailing	Oct 99	305.4	2.4	1.1	814.1	0.2	6.6
Household good retailing	Oct 99	490.5	7.5	27.5	1 423.1	2.5	16.6
Recreational good retailing	Oct 99	204.5	-3.4	4.3	613.1	-0.9	2.9
Other retailing	Oct 99	410.3	-3.8	8.1	1 238.4	-0.2	8.5
Hospitality and services	Oct 99	829.8	-4.6	7.9	2 026.5	-1.7	7.5
Total value of retail sales	Oct 99	4 193.3	-0.4	7.3	12 044.5	0.5	7.0

(a) The figures shown are derived from a monthly survey of retail establishments. Excludes motor vehicle, boat and caravan dealers, service stations, smash repairers, tyre and battery retailers, bread and milk vendors, footwear repairers and electrical appliance repairers n.e.c. Retail establishments which do not have employees are excluded from the survey. Turnover includes retail sales, wholesale sales, takings from repairs, meals and hiring of goods; and commissions from agency activity (e.g. commissions received from collecting dry cleaning, selling lottery tickets etc.).

Source: Retail Trade, Australia (Cat. no. 8501.0).

11 TURNOVER OF RETAIL ESTABLISHMENTS(a), NSW—SEASONALLY ADJUSTED

Period	Food retailing	Department stores	Clothing and soft good retailing	Household good retailing	Recreational good retailing	Other retailing	Hospitality and services	Total
	\$m	\$m	\$m	\$m	\$m	\$m	\$m	\$m
1998								
August	1 471.0	341.2	280.2	401.9	186.5	390.3	743.5	3 814.6
September	1 495.8	353.8	288.7	389.3	190.6	401.5	755.8	3 875.7
October	1 527.1	348.7	302.1	384.8	196.0	379.7	768.7	3 907.1
November	1 512.0	365.1	289.7	382.5	195.1	381.9	793.8	3 920.0
December	1 503.3	344.4	284.2	371.5	192.8	386.6	769.6	3 852.5
1999								
January	1 548.1	387.7	291.7	408.0	202.3	399.5	840.3	4 077.2
February	1 527.5	355.9	283.2	380.6	196.4	401.0	867.2	4 011.9
March	1 568.7	364.2	287.5	375.8	210.3	390.0	880.6	4 077.0
April	1 518.6	360.1	296.9	389.6	208.5	417.6	876.6	4 068.0
May	1 526.4	353.6	282.2	387.3	198.4	425.8	884.0	4 057.7
June	1 537.4	343.3	285.2	390.3	203.0	409.0	875.1	4 043.3
July	1 536.0	364.4	278.6	406.0	216.3	410.0	846.0	4 057.4
August	1 557.1	370.3	303.0	436.7	207.5	426.2	826.5	4 127.4
September	1 582.3	364.8	298.2	456.1	211.6	426.3	869.9	4 209.2
October	1 572.1	380.5	305.4	490.5	204.5	410.3	829.8	4 193.3

(a) The figures shown are derived from a monthly survey of retail establishments. Excludes motor vehicle, boat and caravan dealers, service stations, smash repairers, tyre and battery retailers, bread and milk vendors, footwear repairers and electrical appliance repairers n.e.c. Retail establishments which do not have employees are excluded from the survey. Turnover includes retail sales, wholesale sales, takings from repairs, meals and hiring of goods; and commissions from agency activity (e.g. commissions received from collecting dry cleaning, selling lottery tickets etc.).

Source: Retail Trade, Australia (Cat. no. 8501.0).

12 NEW MOTOR VEHICLE REGISTRATIONS(a), NSW AND AUSTRALIA—SEASONALLY ADJUSTED

Indicator	Latest period	New South Wales			Australia		
		Latest figure	Change from prior period	Change from same period prior year	Latest figure	Change from prior period	Change from same period prior year
		no.	%	%	no.	%	%
Passenger vehicles	Oct 99	17 475	-1.7	-4.8	48 129	-1.2	-10.0
Other vehicles (excluding motor cycles)	Oct 99	3 770	9.3	11.7	10 873	4	4.3
Total registrations (excluding motor cycles)	Oct 99	21 245	0.1	-2.2	59 002	-0.3	-7.6

(a) Includes vehicles (other than those of the defence forces) owned by Government departments and authorities. Excludes mobile plant and equipment, tractors, trailers and non-motorised caravans.

Source: *New Motor Vehicle Registrations, Australia, Preliminary (Cat. no. 9301.0)*.

13 NEW MOTOR VEHICLE REGISTRATIONS(a), NSW—SEASONALLY ADJUSTED

Period	Passenger vehicles	Other vehicles (excluding motor cycles)	Total (excluding motor cycles)
	no.	no.	no.
1998			
August	19 089	3 266	22 355
September	20 003	3 214	23 217
October	18 356	3 375	21 731
November	19 815	3 398	23 212
December	19 616	3 501	23 116
1999			
January	18 567	3 610	22 177
February	18 151	3 353	21 504
March	19 978	3 623	23 601
April	19 041	3 369	22 410
May	18 801	3 126	21 927
June	20 137	3 295	23 432
July	19 603	3 883	23 486
August	17 842	3 464	21 306
September	17 773	3 448	21 221
October	17 475	3 770	21 245

(a) Includes vehicles (other than those of the defence forces) owned by Government departments and authorities. Excludes mobile plant and equipment, tractors, trailers and non-motorised caravans.

Source: *New Motor Vehicle Registrations, Australia, Preliminary (Cat. no. 9301.0)*.

14 ACCOMMODATION ESTABLISHMENTS(a) NSW AND AUSTRALIA—ORIGINAL

Indicator	Unit	Latest period	Latest figure	New South Wales			Australia		
				Change from prior period	Change from same period prior year	Latest figure	Change from prior period	Change from same period prior year	Latest figure
				%	%	%	%	%	%
Room nights	'000	Sept qtr 99	3 345.0	7.9	8.7	10 395.6	10.3	7.8	
Room occupancy rate	%	Sept qtr 99	61.1	5.5	5.5	60.8	8.2	3.6	
Takings	\$'000	Sept qtr 99	375 014	12.7	9.6	1 077 794	13.9	8.0	

(a) Licensed hotels with facilities, motels and guest houses and serviced apartments with 15 or more rooms or units.

Source: Tourist Accommodation, Australia (Cat. no. 8635.0).

15 ACCOMMODATION ESTABLISHMENTS(a) SYDNEY AND NSW—ORIGINAL

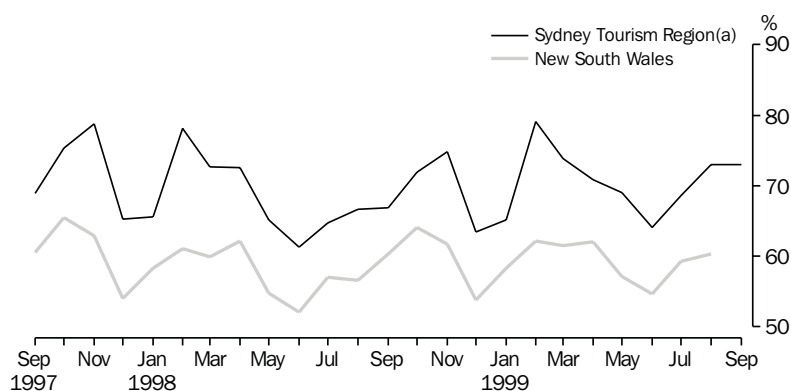
Period	Sydney Tourism Region(b)			New South Wales		
	Room nights	Room occupancy rate	Takings	Room nights	Room occupancy rate	Takings
	'000	%	\$'000	'000	%	\$'000
1998						
June qtr	1 568.3	66.3	216 500	2 890.3	56.3	316 721
September qtr	1 640.0	66.1	222 944	3 077.3	57.9	342 102
December qtr	1 777.0	70.0	246 125	3 210.5	59.8	359 172
1999						
March qtr	1 828.8	72.5	248 997	3 213.2	60.6	360 674
June qtr	1 731.3	68.0	226 273	3 099.9	57.9	332 669
Sept qtr	1 865.9	71.6	247 543	3 345.0	61.1	375 014

(a) Licensed hotels with facilities, motels and guest houses and serviced apartments with 15 or more rooms or units.

(b) Excludes Gosford, Wyong and Blue Mountains Statistical Local Areas.

Source: Tourist Accommodation, Small Area Data, NSW (Prod. no. 8635.1.40.001).

16 ACCOMMODATION ESTABLISHMENTS,
MONTHLY ROOM OCCUPANCY RATE—ORIGINAL



(a) Excludes Gosford, Wyong and Blue Mountains Statistical Local Areas.

Source: Tourist Accommodation, Small Area Data, NSW (Prod. no. 8635.1.40.001).

17 CONSUMER AND PRODUCER PRICE INDEXES—NSW AND AUSTRALIA

Indicator	Unit	Latest period	New South Wales(a)			Australia(b)		
			Latest figure	Change from prior period %	Change from same period prior year %	Latest figure	Change from prior period %	Change from same period prior year %
Consumer Price Index (all groups)	1989-90 =100.0	Sep qtr 99	124.1	0.9	1.8	123.4	0.9	1.7
Price index of materials used in house building (all groups)	1989-90 =100.0	Sep qtr 99	123.7	1.6	2.4	120.5	1.1	0.9
Price index of materials used in building other than house building (all groups)	1989-90 =100.0	Sep qtr 99	115.1	-0.3	0.1	115.2	-0.2	0.3

(a) Refers to State capital city—Sydney.

(b) For the Consumer Price Index this is the weighted average of eight capital cities and for the other two indexes, the weighted average of the six State capital cities.

Source: Consumer Price Index, Australia (Cat. no. 6401.0), Price Index of Materials Used in Building Other Than House Building, Six State Capital Cities (Cat. no. 6407.0), Price Index of Materials Used in House Building, Six State Capital Cities (Cat. no. 6408.0).

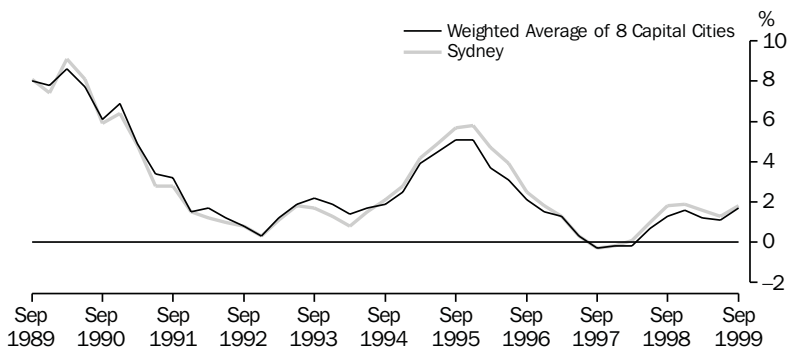
18 CONSUMER AND PRODUCER PRICE INDEXES—NSW(a)

Period	Consumer Price Index, all groups	Price Index of materials used in house building, all groups	Price Index of materials used in building other than house building, all groups
	1989-90 = 100.0	1989-90 = 100.0	1989-90 = 100.0
1998			
June qtr	121.4	120.7	114.8
September qtr	121.9	120.8	115.0
December qtr	122.4	121.8	115.1
1999			
March qtr	122.6	122.0	115.2
June qtr	123.0	121.8	115.4
September qtr	124.1	123.7	115.1

(a) Refers to State capital city—Sydney.

Source: Consumer Price Index, Australia (Cat. no. 6401.0), Price Index of Materials Used in Building Other Than House Building, Six State Capital Cities (Cat. no. 6407.0), Price Index of Materials Used in House Building, Six State Capital Cities (Cat. no. 6408.0).

19 CONSUMER PRICE INDEX, ANNUAL RATE OF CHANGE



Source: Consumer Price Index (Cat. no. 6401.0).

20 SECURED HOUSING FINANCE COMMITMENTS TO INDIVIDUALS FOR OWNER OCCUPATION—NSW AND AUSTRALIA

Indicator	Latest period	New South Wales			Australia		
		Latest figure	Change from prior period	Change from same period prior year	Latest figure	Change from prior period	Change from same period prior year
Lending commitments for the construction or purchase of dwellings—							
Construction of dwellings	Oct 99	292	-7.3	31.6	1 002	0.8	38.9
Purchase of newly erected dwellings	Oct 99	104	2.7	9.8	268	10.1	16.6
Purchase of established dwellings(a)	Oct 99	1 964	6.7	61	4 346	4.7	49.6
Refinancing of existing dwellings	Oct 99	419	6.6	38.6	985	3.6	37
Lending commitments for alterations and additions	Oct 99	110	4.2	28.7	375	32.7	73.3
Total lending commitments to individuals for housing(b)	Oct 99	2 779	4.9	51.2	6 600	4.1	44.3
Total lending commitments to individuals for housing (seasonally adjusted)(b)	Oct 99	3 004	19.1	58.2	7 034	15.8	51.7

(a) Excludes refinancing.

(b) Excludes alterations and additions.

Source: *Housing Finance for Owner Occupation, Australia (Cat. no. 5609.0)*.

21 SECURED HOUSING FINANCE COMMITMENTS TO INDIVIDUALS FOR OWNER OCCUPATION—NSW

Period	Lending commitments for the construction or purchase of dwellings				Total lending commitments to individuals for housing(a)		
	Construction of dwellings	Purchase of newly erected dwellings	Purchase of established dwellings(b)	Refinancing of existing dwellings	Lending commitments for alterations and additions	Original	Seasonally adjusted
	\$m	\$m	\$m	\$m	\$m	\$m	\$m
1996-97	2 117	1 234	12 566	4 062	1 221	19 979	..
1997-98	2 625	1 280	14 445	3 573	1 174	21 923	..
1998-99	2 990	1 147	16 761	4 026	1 126	24 925	..
1998							
August	224	93	1 171	307	85	1 796	r 1798
September	242	105	1 158	326	86	1 831	r 1774
October	222	95	1 220	302	85	1 838	r 1899
November	229	100	1 357	337	91	2 024	r 1987
December	235	96	1 343	295	82	1 970	r 2069
1999							
January	176	63	1 025	249	74	1 512	r 2087
February	239	75	1 223	312	89	1 849	r 1969
March	341	106	1 741	407	126	2 595	r 2214
April	242	79	1 600	333	97	2 255	r 2271
May	276	96	1 787	364	110	2 524	r 2387
June	300	116	1 851	418	105	2 686	r 2476
July	271	96	1 786	335	93	2 489	r 2410
August	286	90	1 800	396	96	2 572	r 2525
September	r 315	r 101	r 1841	r 393	r 106	r 2650	r 2523
October	292	104	1 964	419	110	2 779	3 004

(a) Excludes alterations and additions.

(b) Excludes refinancing.

Source: *Housing Finance for Owner Occupation, Australia (Cat. no. 5609.0)*.

Item	July–September			
	Preliminary Actual		Estimates	
	1998–99	1999–2000	1998–99	1999–2000
	\$m	\$m	\$m	\$m
Current receipts—				
Stamp duties	3 947	3 747	965	1 095
Payroll tax	3 617	3 637	869	953
Land tax	958	859	74	78
Motor vehicle taxes	1 055	977	272	259
Gaming and betting	1 419	1 558	328	377
Commonwealth safety net taxes	1 975	1 989	467	466
Other taxes	1 251	1 245	266	320
Commonwealth general purpose grants	4 687	5 162	1 205	1 294
Commonwealth specific purpose grants	3 464	3 449	808	844
Dividends/tax equivalents	1 280	1 173	425	358
Other current receipts	1 316	1 256	261	276
<i>Total current receipts</i>	<i>24 969</i>	<i>25 052</i>	<i>5 940</i>	<i>6 320</i>
Current payments—				
Interest payments	1 393	1 124	265	162
Superannuation	1 499	1 640	360	402
Subsidies to non-budget sector—				
Redundancies	n.a.	86	18	19
Services	n.a.	840	250	260
Total	990	926	268	279
Departmental payments—				
Redundancies	n.a.	98	23	9
Health	n.a.	5 949	1 394	1 482
Education(a)	n.a.	5 440	1 368	1 397
Law and order(b)	n.a.	1 862	441	491
Community services	n.a.	1 253	302	316
Other	n.a.	6 105	1 398	1 351
Total	20 406	20 707	4 926	5 046
Treasurer's advances(c)	..	160
Less User charges	-2 092	-2 110	-586	-536
<i>Total current outlays</i>	<i>22 196</i>	<i>22 447</i>	<i>5 233</i>	<i>5 353</i>
Current result surplus/deficit(-)	2 773	2 605	707	967
Capital receipts—				
Commonwealth specific purpose grants	831	784	243	71
Other capital receipts	437	151	1	9
<i>Total capital receipts</i>	<i>1 268</i>	<i>935</i>	<i>244</i>	<i>80</i>
Capital outlays—				
Gross fixed capital payments	2 946	2 798	559	593
Capital grants	1 102	1 104	148	202
Less Asset sales	-597	-576	-199	-100
<i>Total capital outlays</i>	<i>3 451</i>	<i>3 326</i>	<i>508</i>	<i>695</i>
Capital result surplus/deficit(-)	-2 183	-2 391	-264	-615
Government Finance Statistics result surplus/deficit(-)	590	214	443	352

(a) Includes Department of Training and Education Co-ordination, Department of School Education, Office of the Board of Studies and TAFE.

(b) Includes Attorney Generals Department, Department of Corrective Services and Police Services.

(c) Expenditure from the Treasurer's Advance is included in the relevant current payments figures.

Source: Financial Statement released by NSW Treasury. Figures may differ from data published in annual ABS publications.

23 ACTUAL PRIVATE NEW FIXED CAPITAL EXPENDITURE, CURRENT PRICES, NSW AND AUSTRALIA—TREND

Indicator	Latest period	New South Wales			Australia		
		Latest figure	Change from prior period	Change from same period prior year	Latest figure	Change from prior period	Change from same period prior year
		\$m	%	%	\$m	%	%
Type of asset—							
New buildings and structures	Sept qtr	998	0.9	-11.4	3 036	-2.3	-20.6
Equipment, plant and machinery	Sept qtr	2 581	0.2	-0.3	7 603	-0.2	-5.1
Total	Sept qtr	3 579	0.4	-3.7	10 639	-0.8	-10.1

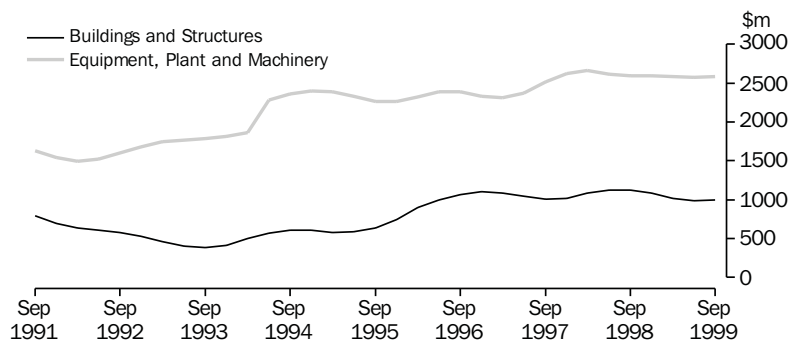
Source: State Estimates of Private New Capital Expenditure (Cat. no. 5646.0).

24 ACTUAL PRIVATE NEW FIXED CAPITAL EXPENDITURE, CURRENT PRICES, NSW—TREND

Period	Type of asset			Total
	New buildings and structures	Equipment, plant and machinery		
	\$m	\$m	\$m	
1998				
June qtr	1 119	2 610		3 729
September qtr	1 126	2 589		3 715
December qtr	1 083	2 589		3 672
1999				
March qtr	1 018	2 588		3 606
June qtr	989	2 576		3 565
September qtr	998	2 581		3 579

Source: State Estimates of New Capital Expenditure (Cat. no. 5646.0).

25 ACTUAL PRIVATE NEW FIXED CAPITAL EXPENDITURE, CURRENT PRICES, NSW—TREND



Source: State Estimates of New Capital Expenditure (Cat. no. 5646.0).

26 INTERNATIONAL TRADE, IMPORTS(a) AND EXPORTS(b)—NSW AND AUSTRALIA

Item	Latest period	New South Wales			Australia		
		Latest figure	Change from prior period	Change from same period prior year	Latest figure	Change from prior period	Change from same period prior year
		\$m	%	%	\$m	%	%
Overseas imports into NSW	Oct 99	3 768	-9.1	2.4	10 220	13.4	13.5
Total overseas exports(c)	Oct 99	1 514	-3.5	-0.8	7 285	3.4	-1.9
Export commodities and SITC(d) code—							
Meat and meat preparations (01)	Oct 99	88	8.0	14.2	370	2.8	5.8
Cereals and cereal preparations (04)	Oct 99	102	8.2	65.1	378	-2.8	21.8
Wool and other animal hair (268)	Oct 99	75	9.9	2.4	218	8.1	-8.0
Coal, coke and briquettes (32)	Oct 99	240	-3.8	-32.0	689	0.5	-15.1
Iron and steel (67)	Oct 99	52	-13.2	-23.9	97	-2.1	-17.5
Aluminium (684)	Oct 99	103	-3.4	-2.9	311	12.4	13.6
Office machines and automatic data processing machines (75)	Oct 99	30	-3.0	6.0	54	-20.3	1.1

(a) Figures shown are Customs value.

(b) Figures shown are Free On Board (FOB) values.

(c) Excludes re-exported goods.

(d) Standard International Trade Classification Revision 3.

Source: International Trade database.

27 INTERNATIONAL TRADE, IMPORTS(a) AND EXPORTS(b)—NSW

Period	Overseas exports of SITC(c) commodities								
	Overseas imports into NSW	Total overseas exports(d)	Meat and meat preparations (01)	Cereals and cereal preparations (04)	Wool and other animal hair (268)	Coal, coke and briquettes (32)	Iron and steel (67)	Aluminium (684)	Office machines and automatic data processing machines (75)
	\$m	\$m	\$m	\$m	\$m	\$m	\$m	\$m	\$m
1996-97	34 229	17 730	784	1 540	859	3 426	968	993	535
1997-98	38 481	r 19 679	923	1 588	1 061	4 048	r 1 167	1 226	522
1998-99	42 143	r 18 011	948	1 202	685	3 765	958	r 1 151	360
1998									
August	3 473	1 600	69	98	43	356	93	99	32
September	3 551	1 635	88	r 124	60	328	95	111	33
October	3 680	1 527	77	r 62	74	354	68	106	28
November	3 746	r 1 547	85	78	73	332	81	91	26
December	3 466	r 1 683	84	139	67	363	70	91	24
1999									
January	3 020	r 1 337	70	101	42	337	68	r 102	18
February	3 093	r 1 325	79	99	61	272	70	78	25
March	r 3760	r 1 493	91	112	55	305	83	107	29
April	3 386	r 1 291	74	95	41	234	56	r 78	29
May	3 603	1 513	75	83	57	283	103	r 93	42
June	3 594	r 1 454	76	111	46	260	59	r 95	33
July	3 498	r 1 516	83	108	54	298	45	104	35
August	3 807	r 1 539	84	106	50	279	48	r 96	38
September	4 147	r 1 570	r 81	r 94	r 69	r 250	59	r 107	r 31
October	3 768	1 514	88	102	75	240	52	103	30

(a) Figures shown are Customs value.

(b) Figures shown are Free On Board (FOB) values.

(c) Standard International Trade Classification Revision 3.

(d) Excludes re-exported goods.

Source: International Trade database.

SELF-HELP ACCESS TO STATISTICS

- CPI INFOLINE* For current and historical Consumer Price Index data, call 1902 981 074 (call cost 75c per minute).
- DIAL-A-STATISTIC* For the latest figures for National Accounts, Balance of Payments, Labour Force, Average Weekly Earnings, Estimated Resident Population and the Consumer Price Index call 1900 986 400 (call cost 75c per minute).
- INTERNET* www.abs.gov.au
- LIBRARY* A range of ABS publications is available from public and tertiary libraries Australia-wide. Contact your nearest library to determine whether it has the ABS statistics you require.

WHY NOT SUBSCRIBE?

- PHONE* +61 1300 366 323
- FAX* +61 03 9615 7848

CONSULTANCY SERVICES

ABS offers consultancy services on a user pays basis to help you access published and unpublished data. Data that is already published and can be provided within 5 minutes is free of charge. Statistical methodological services are also available. Please contact:

<i>INQUIRIES</i>	<i>City</i>	<i>By phone</i>	<i>By fax</i>
	Canberra	02 6252 6627	02 6207 0282
	Sydney	02 9268 4611	02 9268 4668
	Melbourne	03 9615 7755	03 9615 7798
	Brisbane	07 3222 6351	07 3222 6283
	Perth	08 9360 5140	08 9360 5955
	Adelaide	08 8237 7400	08 8237 7566
	Hobart	03 6222 5800	03 6222 5995
	Darwin	08 8943 2111	08 8981 1218

- POST* Client Services, ABS, PO Box 10, Belconnen ACT 2616
- EMAIL* client.services@abs.gov.au



2130710001009
ISSN 1031-8534

RRP \$16.00